



LANDSCAPE

It's the big picture.



ANY DEVICES



COMMAND &
CONTROL



CLOUD &
BIG DATA



DECISIONAL
SUPPORT



TICKETING
SYSTEM



COMPLETE
MODULARITY



EARLY
WARNING



ASSET
MANAGEMENT



POWER
MANAGEMENT



HOLISTIC
APPROACH

The modern office is an ever-evolving place where many forms of intelligence come together to create. Of course, that's not without a laundry list of challenges. Promoting your brand and landing new customers, managing staff, assets, and infrastructure; making investment decisions to improve your facilities or fortify security to prevent loss. And the bigger your business grows, the harder it gets to manage it effectively.

From staff to software and everything in between, your bus.. Computers and servers; copiers and printers; building security and access control; even facilities systems are not immune to change. And what happens when making a change to improve one system impacts another in a way that you weren't expecting? How do you effectively manage all aspects of your business when no single application is the same as the next?

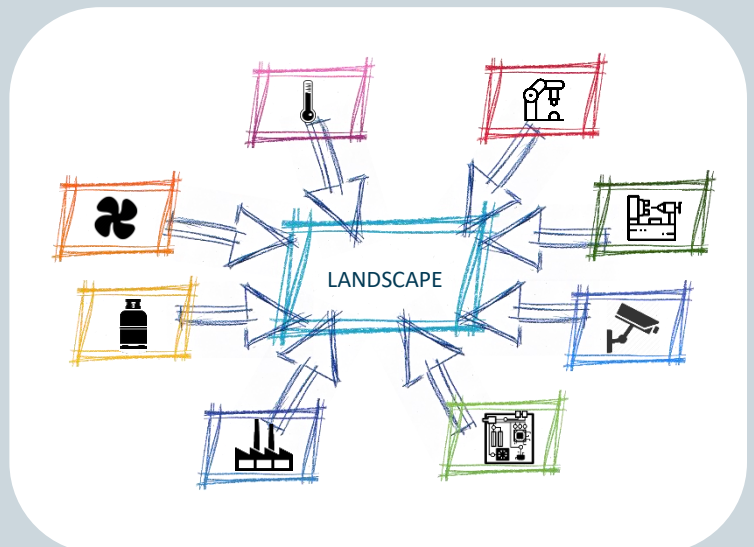


LANDSCAPE - It's the big picture.

Landscape is a unique management solution, designed to connect to any device, ensure operational continuity and add value to existing infrastructure.

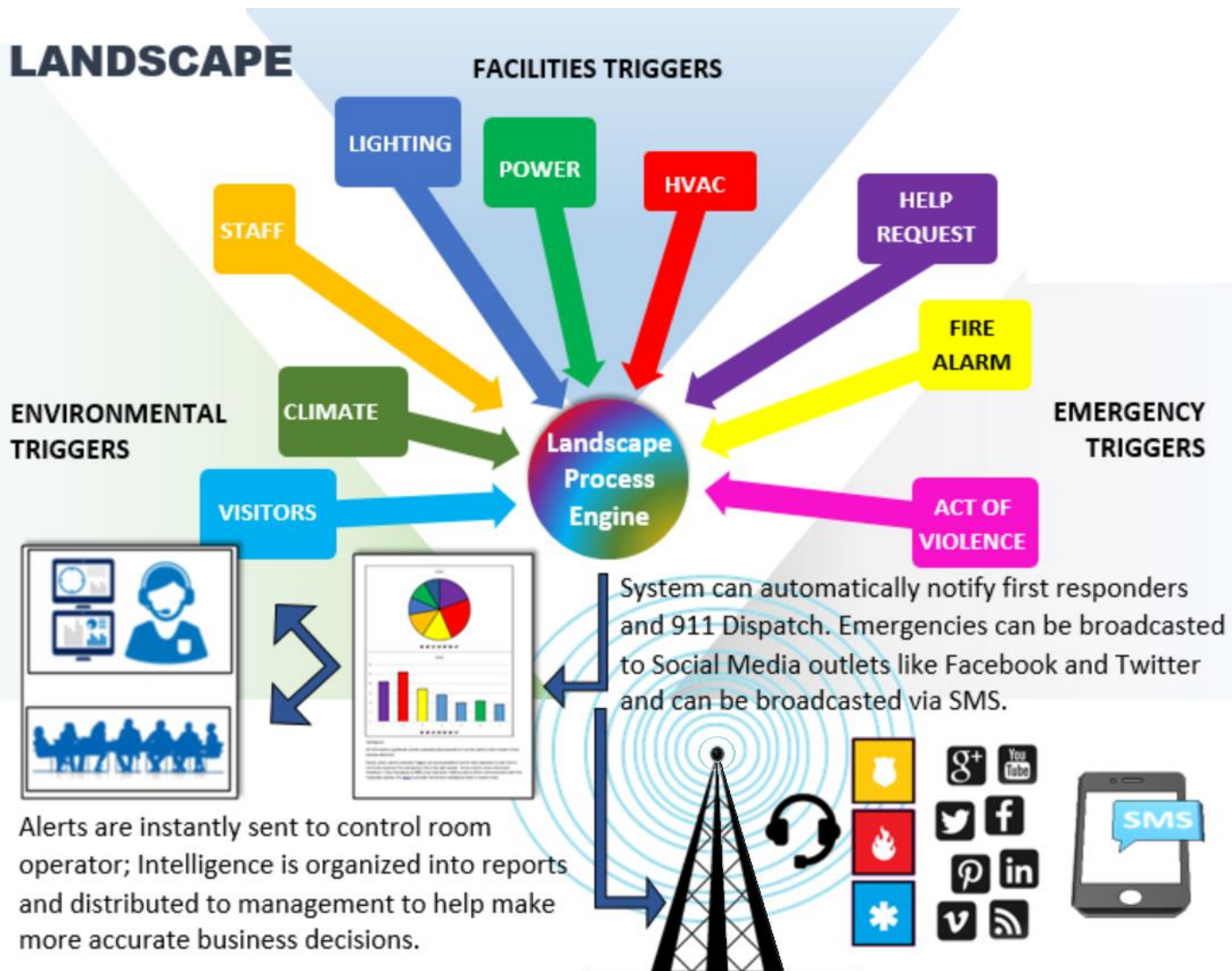
Why choose LANDSCAPE

- ✓ Easily connects with all kinds of systems, devices, and sensors
- ✓ Provides better comprehension for faster evaluation of emergency situations
- ✓ Simplified automation of operational procedures and maintenance
- ✓ Integrated Job Ticketing with multi-layer notification
- ✓ Reduces personnel costs while increasing process efficiency
- ✓ Adds substantial value to existing infrastructure without a significant investment.
- ✓ Easily integrated with any data management system.
- ✓ Drastically improves quality of service



Architecture and Function

Landscape's modular design achieves flexibility, scalability, and redundancy. It affords us the ability to connect to virtually anything be it an appliance, application, or sensor to provide real time intelligence while also managing and monitoring all effortlessly, from a single interface.

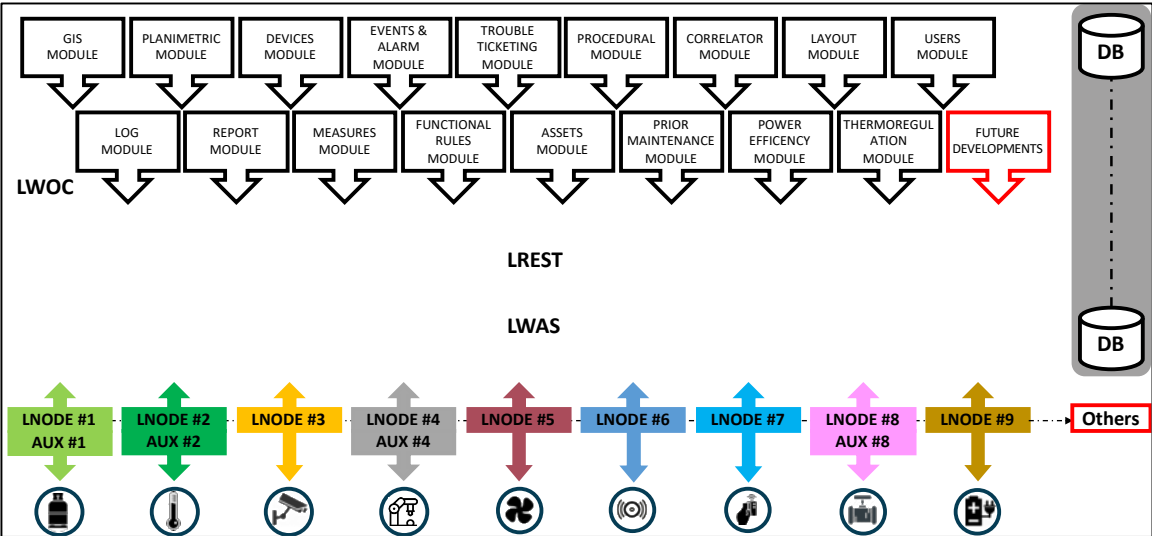


Landscape collects all forms of intelligence from your network, IoT (i.e. social media, directory listings, geolocation), IP and non-IP devices, sensors, environmental triggers, human interface devices, security elements, and utilities. Landscape then processes intelligence through a variety of modules, rules engines, security policies, and other customizable modules and applets. Certain intelligence triggers alarms that are sent to key personnel; other intelligence is distributed as reports to C-level staff; and still other intelligence is passed to 911 Dispatch, Police, Fire, and EMS. It can broadcast message via SMS. Landscape can even be programmed to trigger lockdowns and monitor social media for malicious content. And with open architecture and extensive API support, we can customize a hook to virtually any system.

Architecture and Function

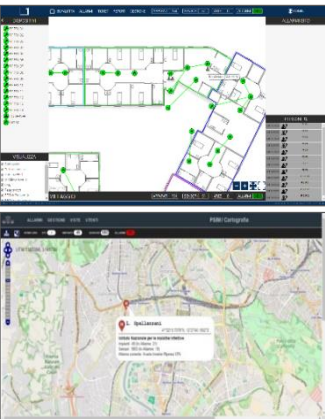
Landscape’s front end is the latest generation Application Web Services and customizable mobile apps. The backend is written in IIS and uses the latest TLS/SSL cryptography. Our open architecture and API support allows interoperability with a wealth of different endpoints, connectivity to virtually any IP-based or non IP-based system, and intelligence from every aspect of your facility. We also support a variety of protocols.

LINK	SUPPORTED PROTOCOLS	SUPPORTED INTERFACES
1 DIRECT	SNMP, MODBUS, BACNET, KNX, MQTT, LONWORKS, CAN-bus, PROPRIETARI	SLP, SEV2, IEEE, FDDI, PPP, CL, GUI
2 USING APPLIANCE		
3 USING PLCE	HTTP, HTTPS, RTP, RTSP, FTP, LDAP, NTP, SMTP	RSS.232, 422 & 485
4 CONVERTER		



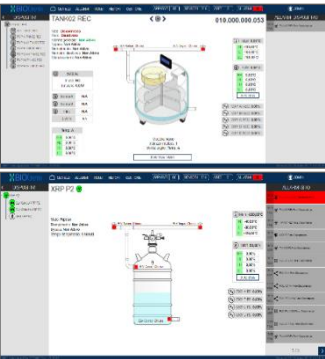
LANDSCAPE	SITES	SERVERS	CONNECTORS	DEVICES
EXPRESS	1	1	8	128
PROFESSIONAL	1	1	12	768
ENTERPRISE	1	N	24	2048
CORPORATE	N	N	N	16384
CUSTOM	N	N	N	N

Architecture and LANDSCAPE functionalities



Geographical maps and blueprints

Geographical maps based on a GIS Open Source Engine and dynamic location referencing a single structure or total campus. Any site can be composed of a multitude of external spaces or buildings; the client can even specify layers and environments for additional customization.



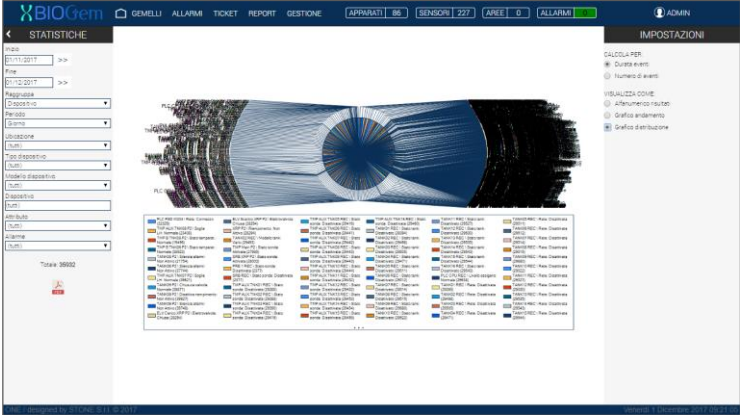
Connection with all devices

Mapping can be a direct connection of system sensors with custom communication interfaces or an indirect connection through an intermediary component (Appliance or PLC).



Events & Alarms

Real time archiving and event management with early warning detection function. Integration with ticketing system and procedure modules are available to ensure full system control and operational continuity.



Advanced Functionalities

Alarm Aggregation
Advanced Adjustment
Advanced Intelligence
Decisional Support
Dynamic Notification
Energy Management
Front Page Editor
Rules Engine
Smart Sensors
(...with more to follow)

Business Models

LICENSING

Premise-Based

Middleware server and control center software
With annual support.
Can be installed on a virtual or physical appliance.

SaaS / Hybrid

The system is installed in our data center and the customer's infrastructure is managed remotely through our middleware server. Licensing is subscription based.



GAMP CFR 21
COMPLIANT



ANSI/ISA 18.2
EEMUA – 191
COMPLIANT



GDPR 2018
READY



DATA CENTER
COMPLIANT



MS Windows
COMPLIANT

MISSION CRITICAL
DESIGN

INDEPENDENT
D.A.L.
TECHNOLOGY



SERVICE
ORIENTED
ARCHITECTURE

LANDSCAPE's software modules

STANDARD	DESCRIPTIONS
MAPS AND BLUEPRINTS	Site's dynamic management based on Open Source GIS; Each site could have external space, buildings and layers
CONNECTORS	Direct customization of system's preferences, georeferencing and information sharing for sensors, controllers & OS using direct communication or via intermediate appliance
EVENTS & ALARMS	Real time alarm archive's management with Early Warning functionalities
NOTIFICATIONS	Notification's layer and channel customization (Email, SMS, call).
TROUBLE TICKETS	Trouble ticket integration, applicable to all technological component registered
PROCEDURES	Operative procedures and maintenance support in order to facilitate operator's decisions.
USERS	Stand-alone or centralized users' management using CRUD functionalities on single profile in order to track each activity into a log file, completely compatible with GDPR.
REPORTS	Statistic real time visualization and exportation in alphanumeric or visual data, the filtering and research engine is full customizable.

ADVANCED	DESCRIPTIONS
EMERGENCY	Supports real time recording of operator's feedback, user's actions, and geolocation to provide operators and key decision makers with accurate information.
FRONT PAGE BUILDER	Allows operators to easily build and edit graphical documentation to illustrate each component in under management.
DATA AGGREGATOR & ALARM	Allows operators to administer data aggregation and access detailed information about alarms.
FUNCTIONAL RULES	Advanced user function for creating, modifying and managing any functional rule (depending on the related alarm), any alarm, any event or any combination of the same.
SCHEDULE SYSTEM	Allows customization of rules based on calendar, events, alarms or specific commands.
PREVENTIVE MAINTENANCE	Allows monitoring and support services for any device registered on the platform. It is designed to prevent failure and extend the useful life of your infrastructure.
ASSET MANAGEMENT	Enables monitoring of any resource belonging to the IT organization's infrastructure from planning to the refresh phase. It can also identify inoperable resources and downed-devices providing accurate inventories, published life cycle, device maintenance records and compatibility.
ENERGY CONSUMPTION	Allows control and documentation of power performance / energy consumption of all registered devices. Data can be compiled and added to intelligence reports.
THERMOREGULATION	Allows select operators to administer temperature control in operational areas and automate temperature control to promote efficiency and minimize power consumption and energy spend.
PARAMETERES RECORDING SYSTEM	Allows Low-latency recording of functional parameters from sensors. Data can also be exported periodically or on demand.
VIRTUAL SPACES	Allows functional grouping of related subcomponents across multiple building and sites.



AirOne Solutions Group, LLC
Specializing in Tomorrow's Challenges Today
Phone: 732.455.8200